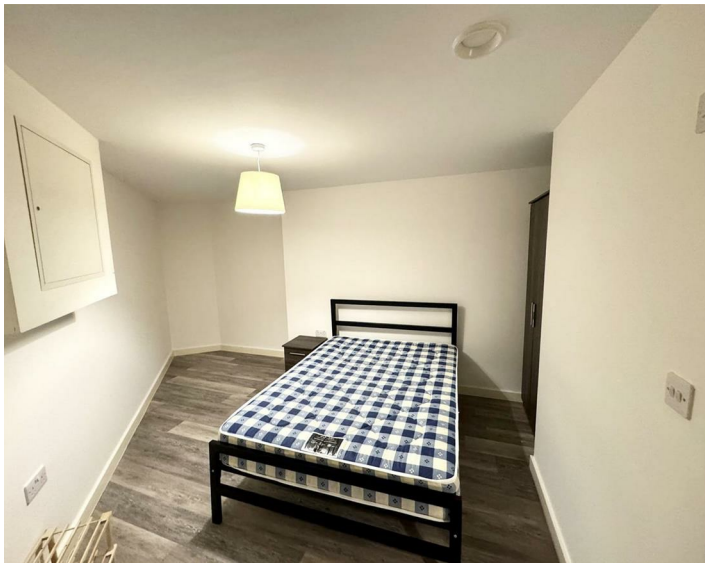




Apt 8 4 Leigh Street, Liverpool, L1 1NT
£750 PCM

www.
cityresidential
.co.uk



About the Property

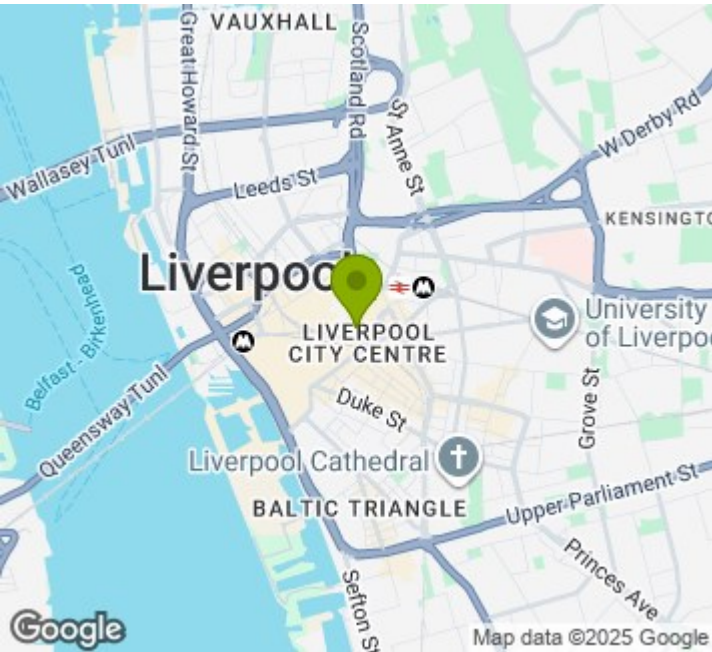
Available now is this well presented, first floor studio apartment in the heart of Liverpool City Centre.

Situated on Leigh Street, it is ideally located for all the amenities the city centre has to offer and is just a short walk from both Liverpool Central and Liverpool Lime Street Stations.
The accommodation further benefits from double glazing and integrated white goods in the kitchen.

This development is serviced by a lift to all floors. There is no parking available at this development.

EPC Rating - D. Council Tax Band - A. A deposit amount of £865.00 is payable upon moving in. Call us now to arrange a viewing.

- Fully Furnished
- Council Tax Band - A
- EPC Rating - D
- Deposit - £865.00



Energy Efficiency Rating

	Current	Potential
Very energy efficient - lower running costs		
(92 plus) A		
(81-91) B		
(69-80) C		
(55-68) D	66	66
(39-54) E		
(21-38) F		
(1-20) G		
Not energy efficient - higher running costs		
England & Wales	EU Directive 2002/91/EC	

City Residential
81/87 Victoria Street, The Old Haymarket, Liverpool L1 6DG
T: 0151 231 6100 F: 0151 231 6105
E: sales@cityresidential.co.uk



WWW. cityresidential .co.uk